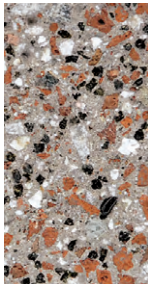
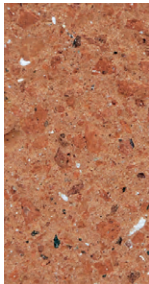


# Hanover® Recycled Prest® Pavers | COLORS with TUDOR® FINISH

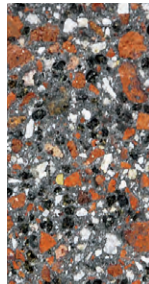
Hanover® Architectural Products manufactures concrete Prest® Pavers with recycled content. The colors shown are just a few Hanover® can provide. Percentage of recycled content is based on the recycled materials used and varies for each color. Percentages for other colors are available upon request.



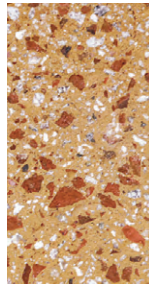
Matrix #3240  
49%



Matrix #2881  
65%



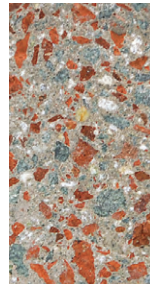
Matrix #3244  
49%



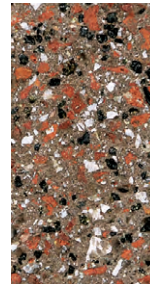
Matrix #3238  
33%



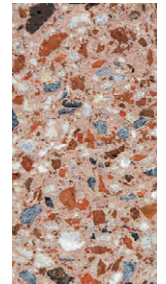
Matrix #2333  
65%



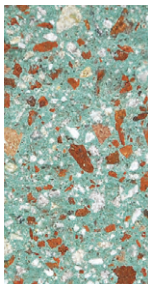
Matrix #3235  
36%



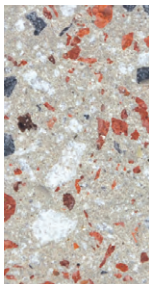
Matrix #3243  
49%



Matrix #3095  
41%



Matrix #3237  
36%



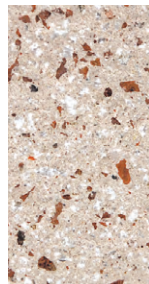
Matrix #3141  
24%



Matrix #2225  
53%



Matrix #3234  
36%



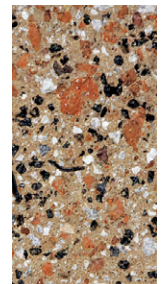
Matrix #2912  
20%



Matrix #2445  
37%



Matrix #3212  
35%



Matrix #3241  
49%

**PLEASE NOTE:** Percentage of recycled content is shown beneath each color. Percentages are available for other Prest® Paver colors and are available upon request.

**PLEASE NOTE:** Additional custom blending is available on special order when quantities permit. The color photos shown were prepared with great concern for accuracy. However, it is suggested that actual samples be requested before specifying. Due to the natural variance of the raw materials used, products can be expected to differ slightly from sample to actual product. It is recommended that the products be cleaned after the installation is finished. Contact our representatives for product suggestions.

©1971-2019 Hanover® Architectural Products

**HANOVER®**  
Architectural Products

5000 Hanover Road, Hanover, PA 17331  
717.637.0500 • fax 717.637.7145  
[www.hanoverpavers.com](http://www.hanoverpavers.com)