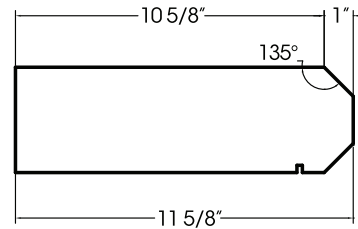
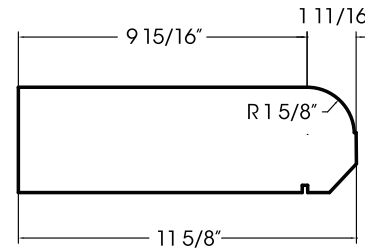


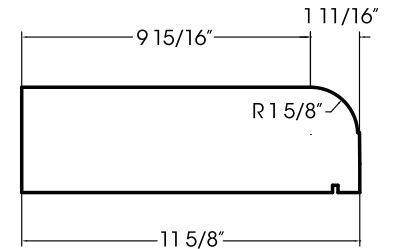
PROFILE A



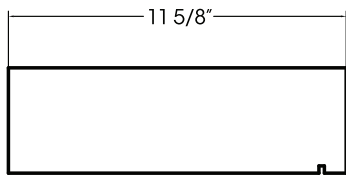
PROFILE B



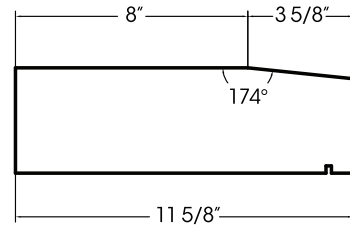
PROFILE C



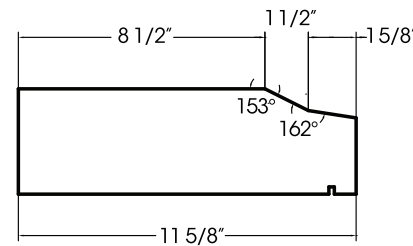
PROFILE D



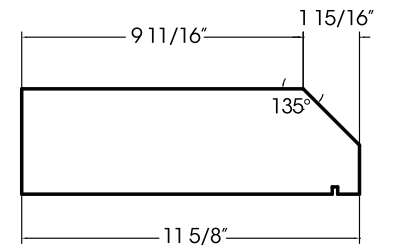
PROFILE E



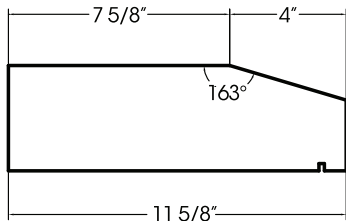
PROFILE F



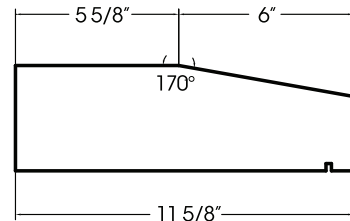
PROFILE G



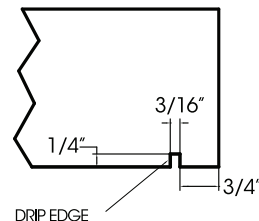
PROFILE H



PROFILE I



PROFILE J



OPTIONAL DRIP EDGE

- Sills are available in lengths of 23 5/8" or 35 5/8".
- Sills with a length of 23 5/8" have a height of 3 5/8".
- Sills with a length of 35 5/8" are available in heights ranging from 3 5/8" to 5 5/8".
- Drip Edge is optional for any profile
- Sills are available in the same colors as Reconstructed Stone™ Masonry and Wall Panels

HANOVER[®]
Architectural Products

5000 Hanover Road
Hanover, PA 17331
800.426.4242
info@hanoverpavers.com
www.hanoverpavers.com

| | | | |
|---|--------|-------------------|-------------------------------|
| DESIGNED | | SCALE: 1"=1' | PRODUCT: |
| DETAILED | J.L.F. | DATE: 2/16/17 | Reconstructed Stone™ Sills |
| TRACED | | PCS:-- | |
| CHECKED | | DWG. NO: 1 of 1 | |
| APPROVED | | LOCATION: HANOVER | |
| *LENGTH AND WIDTH DIMENSIONS ARE MADE WITH A TOLERANCE OF +/- 1/16" THICKNESS AND HEIGHT DIMENSIONS ARE MADE WITH A TOLERANCE OF +/- 1/8" *DIMENSIONS SHOWN ARE NOMINAL. PRODUCTS ARE MADE TO FIT METRIC MODULES. | | | |