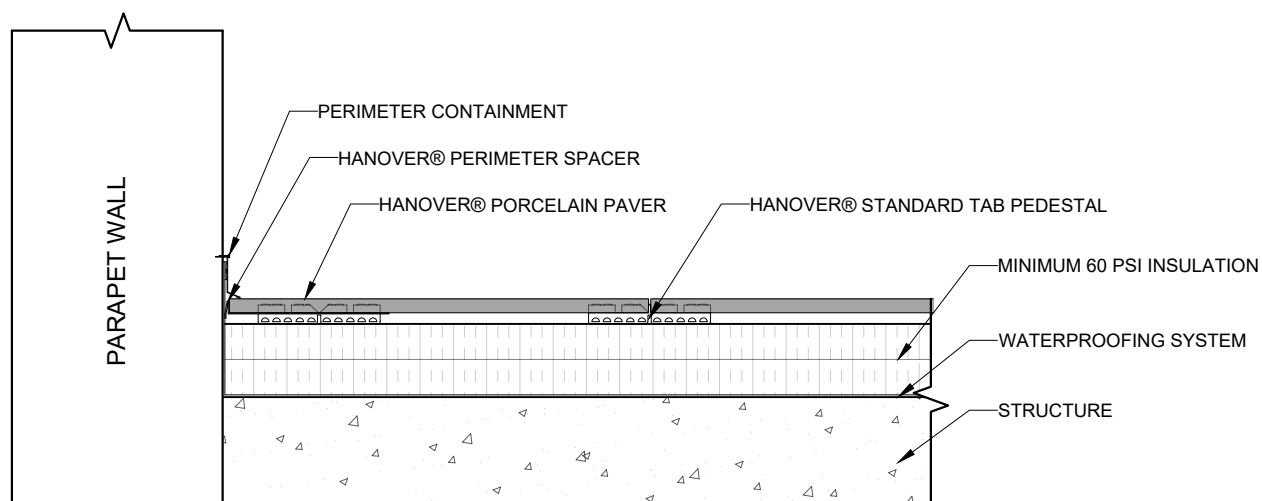
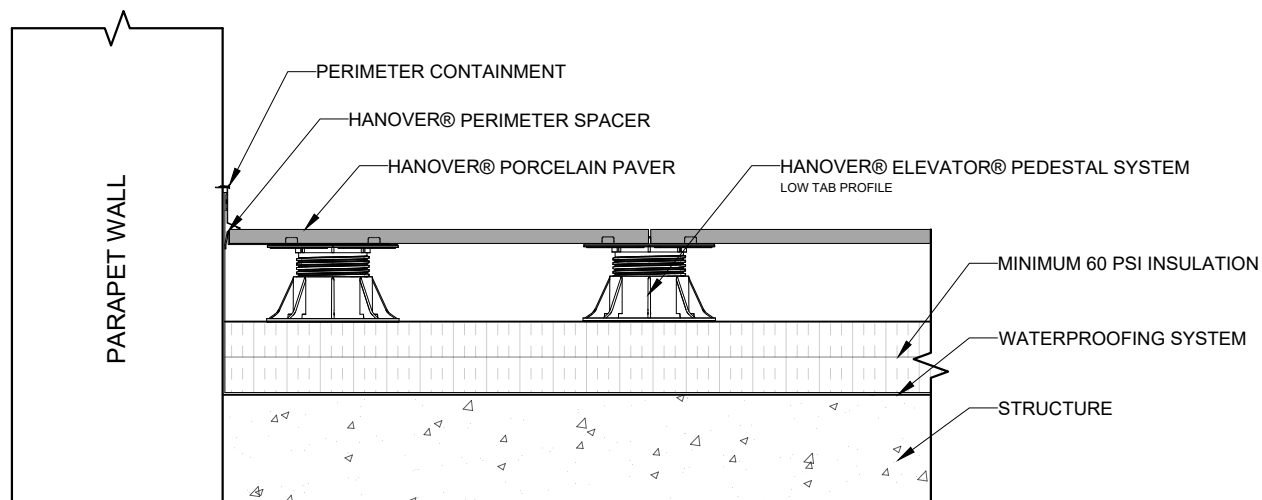


**PORCELAIN PAVER AT PERIMETER**



\*Each project and site conditions are unique. An architect, landscape architect, and/or structural engineer should be consulted to develop a specification suited for the specific project. Neither this drawing nor any of the individual product drawings from Hanover® Architectural Products is intended to be a project specific design. The installation suggestion given in this drawing is only an illustration and not intended to be project specific. Each application and specification for installation should have the attention of an architect, landscape architect and/or structural engineer. As product use and site conditions are not within our control, Hanover® does not guarantee results from use of such products or other information herein: no warranty, express or implied is given.

LOCATION: HANOVER, PA

DATE: 3/11/2022 SCALE: NTS

DRAWN FOR

DETAILED A.R.H

QUOTE/ORDER

REVISION #

CHECKED

APPROVED

DWG: 1 OF 1

SERVICE: ASSISTANT

\*LENGTH AND WIDTH DIMENSIONS ARE  
MADE WITH A TOLERANCE OF  $\pm \frac{1}{8}$ "  
\*THICKNESS AND HEIGHT DIMENSIONS ARE  
MADE WITH A TOLERANCE OF  $\pm \frac{1}{16}$ "  
\*DIMENSIONS SHOWN ARE NOMINAL.  
PRODUCTS ARE MADE TO FIT METRIC  
MODULES.

UNLESS OTHERWISE NOTED:  
\*JOINTS ARE MADE TO AN 1/8"